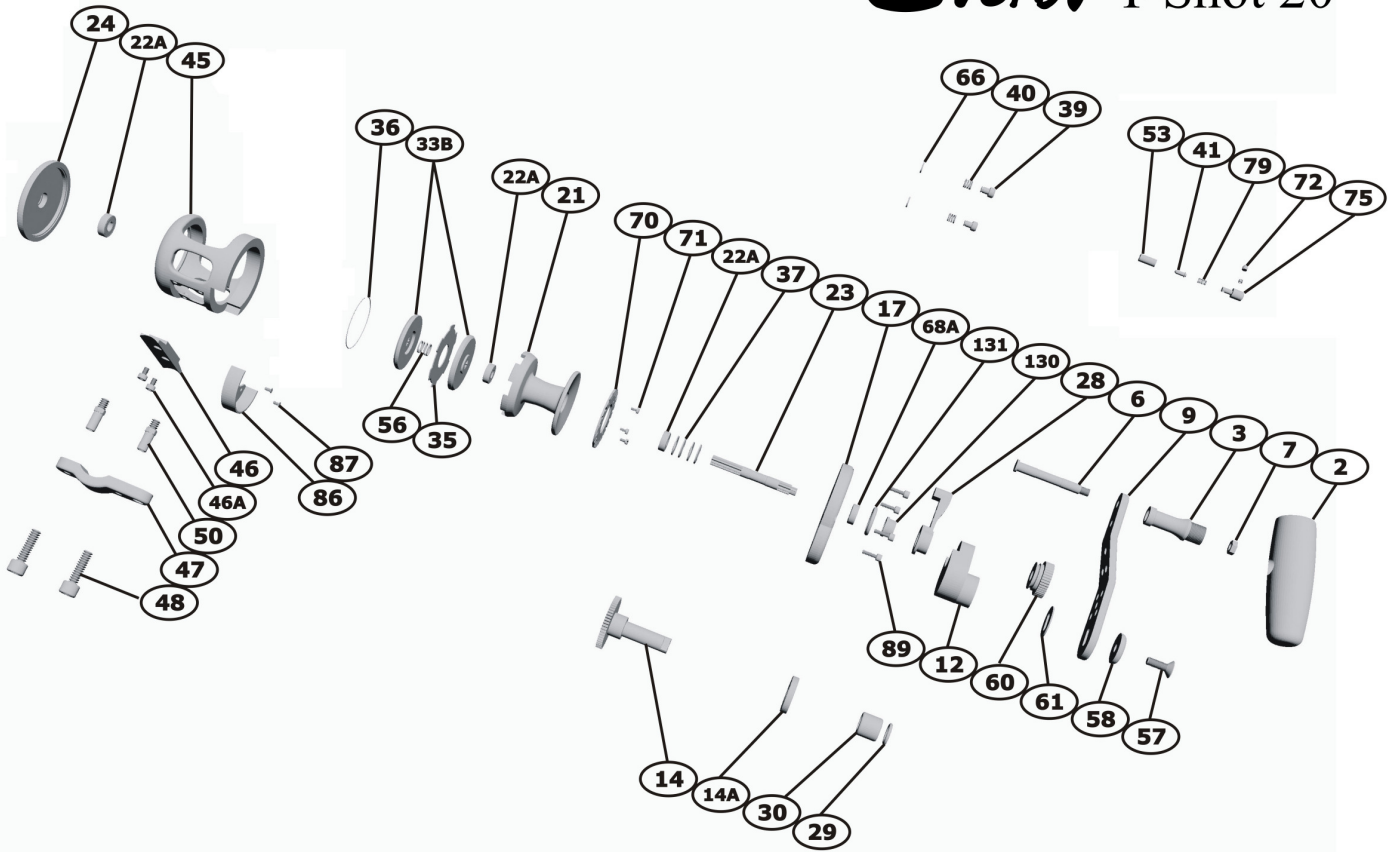


Everol T-Shot 20



- | | | | | | |
|-----|------------------------|-----|------------------------|-----|-----------------------------------|
| 1 | Handle Assembly | 30 | Anti Reverse Bearing | 58 | Handle Washer |
| 2 | Handle Knob | 33B | Carbon Fiber Drag Disk | 60 | Pre Set Button |
| 3 | Handle Tube | 35 | Winged Disk | 61 | Slotted Washer |
| 6 | Handle Shaft | 36 | Drag Loc-Spring Ring | 63 | Pawl Spring |
| 7 | Handle Nut | 37 | Drag Spring | 64 | Pawl Pin |
| 9 | Handle Slide Plate | 39 | Strike and Free Button | 66 | Stop Spring-Lock Ring |
| 12 | Gear Housing | 40 | Stop Spring | 68A | Ball Bearing |
| 14 | Main Gear | 41 | Clicker Striker | 70 | Clicker Striker Plate |
| 14A | Main Gear Ball Bearing | 43 | Harness Lug | 72 | Clicker Release Button And Spring |
| 15 | Anti Reverse Pawl | 45 | One-Piece Frame | 75 | Clicker Selector |
| 16 | Pawl Shaft | 46 | Reel Stand | 79 | Striker Spring |
| 17 | Right Side Plate | 46A | Reel Stand Screw | 86 | Main Gear Carter |
| 21 | Spool | 47 | Rod Clamp | 87 | Carter Screw |
| 22A | Ball Bearing | 48 | Clamp Screw | 89 | Allen Screw |
| 23 | Pinion Shaft | 50 | Collar Nut | 130 | Drag Cam |
| 24 | Left Side Plate | 53 | Striker Pipe | 131 | Lever Drag O-ring |
| 28 | Drag Lever | 56 | Pinion Gear Spring | | |
| | | 57 | Handle Screw | | |